



Ch. 12.1

THE IMPERIALIST VISION

Objectives

- Analyze how a desire for more trade and markets led to political change between 1877 and 1898.
- Cite the motivations for and methods of American expansion in the Pacific.

Imperialism

I. Imperialism

imperialism – economic and political domination of a strong nation over weaker nations.

causes:

1. market for goods
2. Source of raw material
3. National Prestige (Power)
4. Spreading Religion

In the 1880s, American opinion began to shift and more people wanted to make the United States

25%  ☒ a. a world power.

25% ☐ b. more isolated.

25% ☐ c. a protectorate.

25% ☐ d. part of Pan-America.

When Americans began looking overseas for new markets in the 1800s, they naturally tended to look

25% ☐ a. eastward.

25% ☐ b. to Spain.

25% ☒ c. westward.

25% ☐ d. to England.

The economic and political domination of a strong nation over other weaker nations

20% ☐ a. Pan-Americanism

20% ☐ b. Alfred T. Mahan

20% ☒ ☐ c. imperialism

20% ☐ d. Matthew C. Perry

20% ☐ e. Anglo-Saxonism

The idea that the English-speaking nations were destined to dominate the planet

20% ☐ a. Pan-Americanism

20% ☐ b. Alfred T. Mahan

20% ☐ c. imperialism

20% ☐ d. Matthew C. Perry

20% ☒ e. Anglo-Saxonism

Imperialism (cont)

II. Indirect & Direct Rule

A. Indirect Rule

- Local rulers maintained areas

B. Direct Rule

- Other countries officials run areas/countries

What was a territory called when an imperial power allowed local rulers to stay in control and protected them against invasion?

25% ☐ a colony

25% ☒ b. a protectorate

25% ☐ c. an unincorporated territory

25% ☐ d. a state

Expansion in the Pacific

III. Expansion in Pacific

A. Perry Opens Japan

1. Commodore Perry

a. July 8, 1853

-Tokyo Bay

*culture
change



Who took a naval expedition to Japan to negotiate a trade treaty

25% ☐ a. Millard Fillmore

25% ☐ b. Alfred T. Mahan

25% ☐ c. John L. Stevens

25% ☒ d. Matthew C. Perry

Annexing Hawaii



Annexing Hawaii



B. Annexing Hawaii

1. 1872 trade treaty

a. agriculture plantations

-white planters

*new constitution

2. Queen Liliuokalani (1891)

When a trade treaty that exempted Hawaiian sugar from tariffs came up for renewal, the Senate insisted that the Hawaiians grant the United States rights to

25% ☐ a. establish missions.

25% ☐ b. govern the islands.

25% ☐ c. increase tourism.

25% ☒ d. a naval base.

Trade & Latin America

IV. Latin America

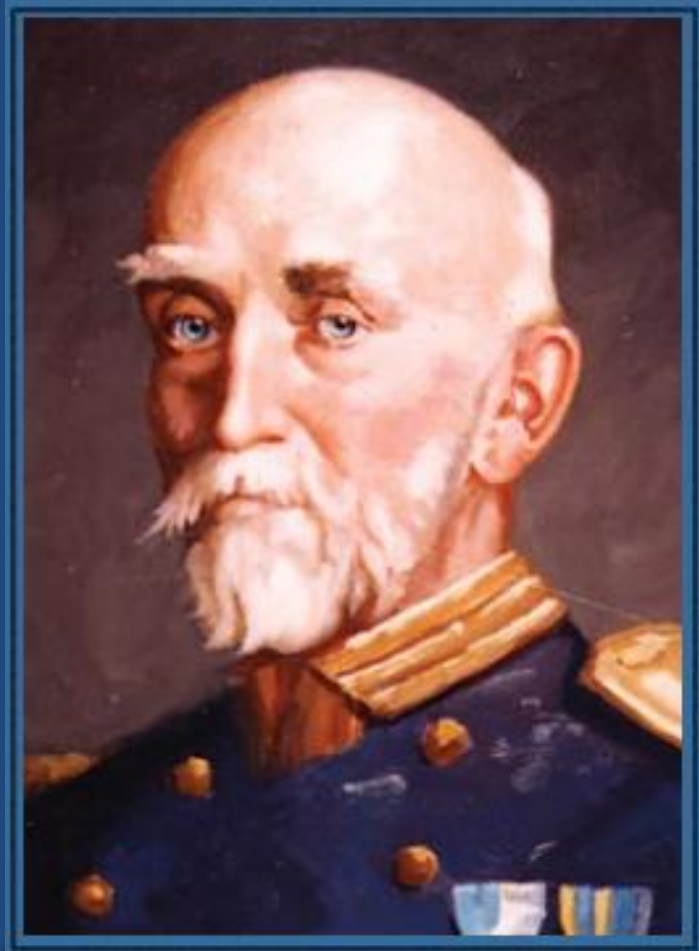
A. James Blaine

1. Pan-Americanism

V. Building a Modern Navy

A. Alfred T. Mahan

1. *The Influence of Sea Power Upon History 1660-1783*



Who wrote a best-selling book that helped to build public support for a big navy

25% ☐ a. Theodore Roosevelt

25% ☒ b. Alfred T. Mahan

25% ☐ c. Grover Cleveland

25% ☐ d. Matthew C. Perry

Homework

Video Questions on Website (Module #5)